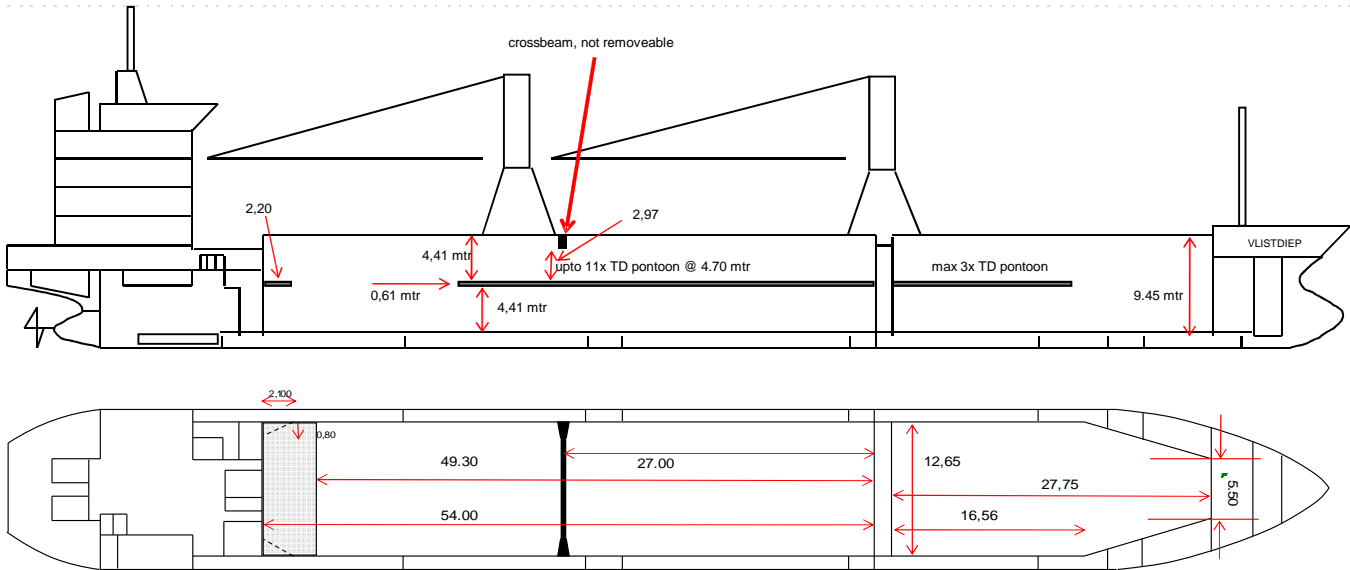


MV Vlistdiep



Main Data

Type	Multi Purpose Vessel, geared	IMO No.	9414187
Flag	Dutch	Call Sign	PHLX
Port of Registry	Groningen	Deck Stanchions	yes (70 pieces)
Classification	100 A5, DBG DG, Multi-Purpose Dry Cargo Ship, Equipped for Carriage of Containers, Strengthened for Heavy Cargo	Cement Feeding Holes	yes
Ice Class	II (Fin,Swe)/ 100 A 5 (GL)	Grain fitted	yes
Class	GL	ITF fitted	yes
P&I	NNPC	App B	yes
Built	July 2007	Bow thruster	yes
		IMO fitted	yes
		Box shaped	yes

Dimensions

Dwat s/w	7,600/ 7,400 mt
Dwcc s/ w	7,300/ 7,100 mt
GT/ NT	4,990/ 2,648
Airdraft	33 mt
Length o. a.	119.98 m
Length b.p.	112.15 m
Breadth max.	15.20 m
Moulded Depth	8.45 m
Draft s/w	7.03/ 6.9 m
WLTOHC ballast	5,80 m
WLTOHC laden	3,80 m
TPC	16 mt

Holds & Hatches

Number of holds	2 holds
Hold/ Hatch 1	27.75 m x 12.65 m / 5.50 m x 9.45 m
Hold/ Hatch 2	51.30 m x 12.65 m x 9.45 m
Hold 1	2,950 cbm/ 104,200 cbft
Hold 2	6,050 cbm/ 213,700 cbft
Total	9,000 cbm/ 317,900 cbft
Hatchcovers	pontoon type
Ventilation	3 - 4 air changes per hour
Tanktop strength	15 mt/ sqm
Hatch strength	1,75 mt/ sqm
Tweendeck strength	2,00 mt/ sqm
Moveable TD	yes (12 pieces/ 8 pieces for bulkhead)

Cranes

Number of Cranes	2
SWL	60 mt/ 40 mt/ 34 mt
Max. Outreach	16 m/ 25 m/ 28 m

Grabs

nil

All details to be considered as about, given in good faith but without any guarantee.