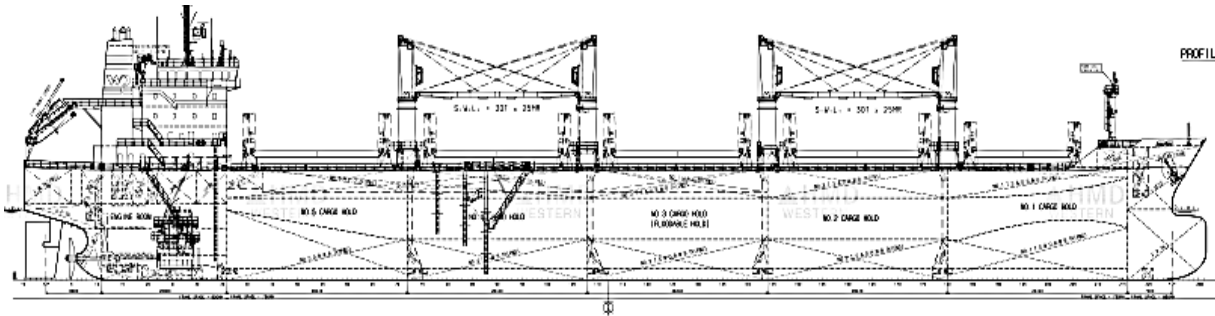


# MV Western Lucrezia



## Main Data

Type	Bulk Carrier	IMO No.	9609706
Flag	Cyprus	Call Sign	5BTA3
Port of Registry	Limassol	Deck Stanchions	no
Classification		Cement Feeding Holes	yes

I ✕ HULL ✕ MACH  
 Bulk carrier CSR CPS(WBT) BC-A  
 (holds 2, 4 may be empty) ESP  
 GRAB[20]  
 Unrestricted navigation  
 ✕ AUT-UMS, MON-SHAFT, GREEN  
 PASSPORT, INWATERSURVEY

Ice Class	No	Grain fitted	yes
Class	BV	ITF fitted	yes
P&I	NoE	App B	yes
Built	2013	Bow thruster	no
		IMO fitted	no
		Box shaped	no

## Dimensions

Dwat s/w	37,400 mt/ 36,300 mt
Dwcc s/w	36,000 mt/ 35,000 mt
GT/ NT	22,668/ 11,856
Airdraft	46.5 m
Length o. a.	186.96 m
Length b.p.	178 m
Breadth max.	28.63 m
Moulded Depth	15.6 m
Draft s/w	10.42 m/ 10.20 m
WLTOHC ballast	12.90 m
WLTOHC laden	8.50 m
TPC	48.25 mt/ cm

## Cranes

Number of Cranes	4
SWL	30 mt
Max. outreach	25 m

## Grabs

Number of Grabs	4
SWL	15 mt
Volume	12 cbm/ 425 cbft

## Holds & Hatches

Number of holds	5
Hold 1	28.00 m x 20.31-4.84
Hatch 1	14.22 x 15.90 m
Hold 2	26.07 x 20.31 m
Hatch 2	18.96 x 15.90 m
Hold 3	23.70 x 20.31 m
Hatch 3	18.96 x 15.90 m
Hold 4	26.07 x 20.31 m
Hatch 4	18.96 x 15.90 m
Hold 5	28.10 x 20.31 - 6.43 m
Hatch 5	18.96 x 15.90 m
Hold 1	9,000 cbm/ 306,000 cbft
Hold 2	10,400 cbm/ 370,000 cbft
Hold 3	10,080 cbm/ 356,000 cbft
Hold 4	10,400 cbm/ 370,000 cbft
Hold 5	9,700 cbm/ 340,000 cbft
Total grain	49,480 cbm/ 1,742,000 cbft
Total bale	47,940 cbm/ 1,690,000 cbft
Hatchcovers	McGregor Folding Type
Ventilation	Natural
Tanktop strength	18.9 mt/ sqm (Ho 1/ 3/ 5)
	15.8 mt/ sqm (Ho 2/ 4)
Hatch strength	1.75 mt/ sqm

All details to be considered as about, given in good faith but without any guarantee.